

LAURIE WILDMAN

Fall/Winter
2009/2010



Laurie Wildman hails from the upper Midwest, her design business based in Chicago. Laurie has a long-standing passion for vintage clothing with a focus on outerwear statement pieces, specifically coats and jackets. The Victorian and Renaissance eras subtly influence her style, both in the clothes she wears and those she designs.

Living in the Midwest, Laurie is inspired by the brisk mornings and cool evenings of the Fall. She recognizes the importance of layers to stay fashionable year-round. Her designs transcend the Fall season and can be worn stylishly for all occasions. Her line flatters many physiques and appeals to a woman who is polished and sophisticated.

Laurie's Fall/Winter 2009/2010 collection focuses on deep reds and rich creams tailored from wool and cashmere. The detail and workmanship truly give her a unique signature in the industry. Laurie has participated in Chicago Fashion Week and many benefit runway shows and events.

LAURIE WILDMAN

1030 North Dearborn Suite 216
Chicago IL 60610 USA

231 883 9757 ✉ laurie@lauriewildman.com
lauriewildman.com





Pimlico

Designed to flatter a woman's natural curves, *Pimlico* hits at the natural waist with strong yet delicate shoulders. Constructed of the finest wool with velvet zebra detailing on the lapels and cuffs, this jacket is sure to help make an entrance!

Sizes:

XS (0-2)

S (2-4)

M (6-8)

L (10-12)

Production Time:

3-4 Weeks



231 883 9757  lauriewildman.com
laurie@lauriewildman.com



Pimlico

Designed to flatter a woman's natural curves, *Pimlico* hits at the natural waist with strong yet delicate shoulders. Constructed of the finest wool with velvet zebra detailing on the lapels and cuffs, this jacket is sure to help make an entrance!

Sizes:

XS (0-2)

S (2-4)

M (6-8)

L (10-12)

Production Time:

3-4 Weeks



231 883 9757  lauriewildman.com
laurie@lauriewildman.com





Del Mar

Victorian lines and modest military detail are evident. *Del Mar* features Laurie's blouson shoulder and flattering velvet details at the lapel, collar, cuffs, and natural-waist hem line. This cream stunner is sure to stand out in a crowd!

Sizes:

XS (0-2)

S (2-4)

M (6-8)

L (10-12)

Production Time:

3-4 Weeks



231 883 9757  lauriewildman.com
laurie@lauriewildman.com





Ascot

Vibrant red wool pairs with luxe velvet zebra to make Ascot unique. The hip-hitting hemline and waist-cinching belt accentuate a woman's shape while the velvet-piping detailed cuffs evoke the designers' signature Victorian details.

Sizes:

XS (0-2)

S (2-4)

M (6-8)

L (10-12)

Production Time:

3-4 Weeks



231 883 9757  lauriewildman.com
laurie@lauriewildman.com



Ascot

Vibrant red wool pairs with luxe velvet zebra to make Ascot unique. The hip-hitting hemline and waist-cinching belt accentuate a woman's shape while the velvet-piping detailed cuffs evoke the designers' signature Victorian details.

Sizes:

XS (0-2)

S (2-4)

M (6-8)

L (10-12)

Production Time:

3-4 Weeks



231 883 9757  lauriewildman.com
laurie@lauriewildman.com





Arlington

Feminine details abound with Arlington! This 3/4 length coat includes an attached scarf, worn loose on the model, figure-flattering belt, and is lined with Laurie's trademark Turquoise Silk Charmeuse. Get noticed with this red charmer!

Sizes:

XS (0-2)

S (2-4)

M (6-8)

L (10-12)

Production Time:

3-4 Weeks



231 883 9757 ~ lauriewildman.com
laurie@lauriewildman.com



Arlington

Feminine details abound with Arlington! This 3/4 length coat includes an attached scarf, worn loose on the model, figure-flattering belt, and is lined with Laurie's trademark Turquoise Silk Charmeuse. Get noticed with this red charmer!

Sizes:

XS (0-2)

S (2-4)

M (6-8)

L (10-12)

Production Time:

3-4 Weeks



231 883 9757  lauriewildman.com
laurie@lauriewildman.com





Chantilly

Every collection, Laurie Wildman will feature a full-length cream coat. Always a stunner, this season's statement piece is a luxurious creme cashmere wool accented with chocolate zebra velvet at the lapels, collar, and cuffs.

Sizes:

XS (0-2)

S (2-4)

M (6-8)

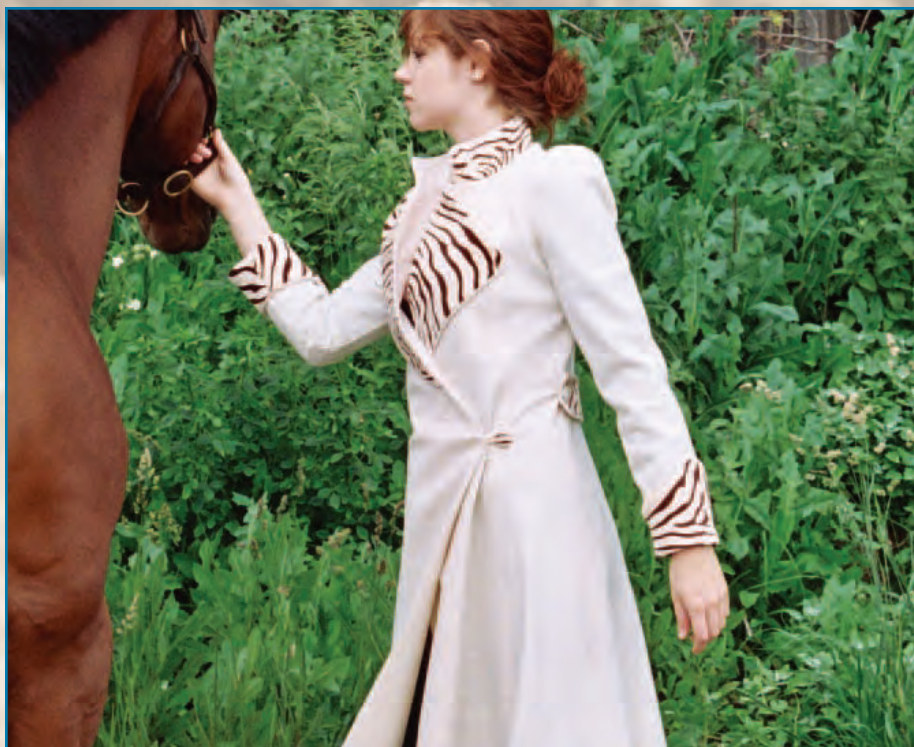
L (10-12)

Production Time:

3-4 Weeks



231 883 9757 ~ lauriewildman.com
laurie@lauriewildman.com



Chantilly

Every collection, Laurie Wildman will feature a full-length cream coat. Always a stunner, this season's statement piece is a luxurious creme cashmere wool accented with chocolate zebra velvet at the lapels, collar, and cuffs.

Sizes:

XS (0-2)

S (2-4)

M (6-8)

L (10-12)

Production Time:

3-4 Weeks



231 883 9757  lauriewildman.com
laurie@lauriewildman.com